

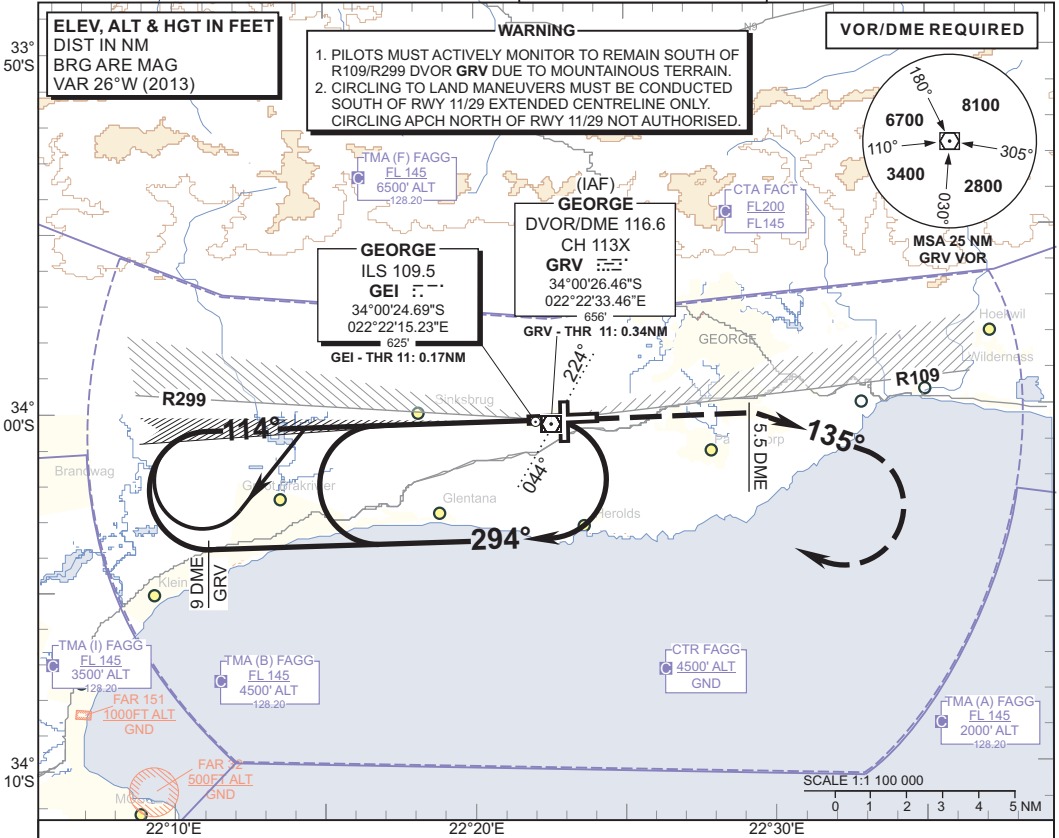
**INSTRUMENT
APPROACH
CHART**

AERODROME ELEV 648'
HEIGHTS RELATED TO
THR RWY 11 - ELEV 622'

GEORGE APP: 128.20
TWR: 118.90
ALPHA OSCAR (APN): 122.65
ATIS: 126.225



GEORGE
ILS RWY 11
CAT A - D



WARNING

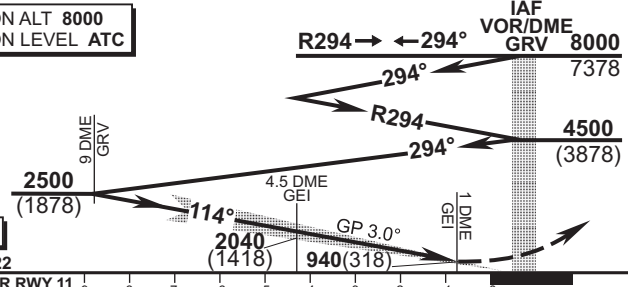
- PILOTS MUST ACTIVELY MONITOR TO REMAIN SOUTH OF R109/R299 DVOR GRV DUE TO MOUNTAINOUS TERRAIN.
- CIRCLING TO LAND MANEUVERS MUST BE CONDUCTED SOUTH OF RWY 11/29 EXTENDED CENTRELINE ONLY. CIRCLING APCH NORTH OF RWY 11/29 NOT AUTHORISED.

VOR/DME REQUIRED

GEI LOC/DME	4.5	3	2	1		
ADVISORY ALT (HGT)	2040 (1418)	1570 (948)	1260 (638)	940 (318)		

TRANSITION ALT 8000
TRANSITION LEVEL ATC

INA ALT: 8000 or higher MSA



MISSED APPROACH:
Track RWY centreline to 5.5 DME GRV, and turn right on HDG 135°. At 3500' ALT turn right climbing to 4500' ALT and return to GRV and enter hold or as directed by ATC.

ILS RDH 53
THR ELEV 622

NM to/from THR RWY 11					9	8	7	6	5	4	3	2	1	0	
OCA (H)					A	B	C	D	GS	KT	80	100	120	140	160
Straight-in Approach					CAT I					922 (300)					
Rate of descent					FPM					420	525	630	736	841	
Circling					Circle to land South of RWY 11/29 extended centreline only					NOTE: 1. Descend in the hold to 4500' ALT. 2. Procedure turn approach applicable only within 30° of the outbound heading. Use phraseology "Request procedure turn approach". 3. Circle to land at the discretion of the pilot in command. 4. DME GEI (109.5 MHz) collocated with glide path transmitter.					

CHANGE: OCA/H Table